



JEFFERSON CITY CHAPTER OCTOBER/NOVEMBER NEWSLETTER



Upcoming Events and Meetings

Tuesday, November 30, 2010 Chapter Meeting

The MSPE Jefferson City Chapter Lunch for November will be held on Tuesday, November 30, 2010 from 12:00 p.m. to 1:00 p.m. at the American Legion at 1423 Tanner Bridge Rd. The meeting will be in the "Annex" room, through the bar area off the main dining room. There will be a lunch buffet with a choice of entrees, vegetables, salad, bread, dessert, and your choice of tea, lemonade, or coffee to drink. The cost will be \$8 per member and please mention that you are with the Engineers Club when you pick up your food.

Students from the University of Missouri Columbia, who are members of the student chapter of Engineers without Borders, will be giving a presentation on the work that they are doing and about their upcoming trip to Ciudad Espana. If you are planning on attending, please RSVP to David Bange by 4 p.m. on Monday, November 29, 2010. David can be reached by email at dbange@jeffcitymo.org or by phone at (573) 634-6433.

7th Annual Fall Professional Development Days

MSPE's 7th Annual Fall Professional Development Days will be held on Tuesday and Wednesday, December 7 and 8, 2010 at the Capitol Plaza Hotel at 415 West McCarty Street in Jefferson City. This 2-day event provides up to 15 hours of professional development hours (PDH) for your P.E. licensure renewal at less than \$30 per PDH unit for MSPE members. Lunch and coffee breaks are included in registration fee.

Scheduled program sessions for 2010 include topics on Disaster Recovery on Tuesday, December 7 and Design Build on Wednesday, December 8. Disaster Recovery topics will include Minnesota I-35W Bridge Collapse, Crisis Communication, Missouri I-470 Slope Failure, SAVE Coalition and more. Design Build topics will include Design Build "Nuts and Bolts", Contractual Differences, Ethics, Leadership Skills and Legislation.

Please remember the deadline for registration is by 5 p.m. on Wednesday, December 1, 2010. For more information, please check the copy of the flyer/registration form attached at the end of this newsletter. For any questions, please contact the MSPE office at 573-636-4861.

December 7, 2010, Chapter Christmas Party

The Christmas party will be December 7, 2010 at Madison's Café located at 216 Madison Street in Jefferson City from 6:00 p.m. to 9:00 p.m.. A Happy Hour cash bar will be available from 6:00 p.m. to 6:30 p.m., followed by Butler-Style Dinner from between 6:30 p.m. to 7:30 p.m.

A choice of the following entrées ranging from \$10.50 to \$17.50 will be available: Top Sirloin, Chicken Parmigiano, Bone-In Pork Chop, or Lasagna with the cost of the dinner depending on the entrée selected. Also included are a salad & Italian bread, and the beef and chicken dishes will also include a side of cavatelli. The gift exchange is voluntary and will start around 7:30 p.m. with a suggested gift price ranging from \$10 to \$15. Participating couples may bring either individual gifts or pair up with a single gift.

Please check the copy of the attached flyer at the end of this newsletter for more information. If you are planning on attending, please RSVP to David Bange, P.E. by Thursday, December 2, 2010 at either DBange@jeffcitymo.org or 573-634-6433. Hope to see everyone there.

Project Lead the Way

MSPE is Looking for Volunteers to Help Promote Engineering to Middle School Students

The Jefferson City Chapter of MSPE will again be partnering with Jefferson City Public Schools to serve as mentors for their program to introduce engineering to students at Thomas Jefferson and Lewis & Clark Middle Schools. The program is part of Project Lead the Way (PLTW), which is a national nonprofit organization established to help schools give students the knowledge they need to excel in high-tech fields. The middle school portion of the program is called Gateway to Technology. We will also help out at California Middle School and their new "Engineering Science" class.

At Jefferson City, students are taking classes in the following modules:

- Automation & Robotics, where students work with gears, joints, and automated design concepts to learn the basics of mechanics and machinery.
- The Magic of Electrons, where students use hands-on projects to learn about voltage, current, and circuitry.
- Design & Modeling, where students will use geometry, problem-solving, teamwork, and project management skills to design and develop product prototypes. The students will be using the "Auto Desk Inventor" software program, and the teachers have asked if any of us have any experience with this program and/or if someone would be willing to come in and work through the program and help the teachers (and maybe the students) learn the program. The program sounds like it may be similar to AutoCADD.

At California, students in the "Engineering Science" class are learning basic engineering concepts through lab activities, such as building a scale model chair out of index cards.

We would like to have engineers from all disciplines occasionally attend classes during the day and possibly mentoring sessions after school. We would be assisting with their labs, and/or giving brief general presentations about engineering, discussing the skills needed to be an engineer (problem solving, critical thinking, etc.) and possibly discussing your field of engineering geared towards getting the kids excited about engineering.

If you would be interested in helping promote engineering to these students, please contact our chapter PLTW coordinator, Jason Sommerer at Jason.Sommerer@modot.mo.gov or by phone at 573-522-6992.

Other Upcoming Meetings, Events, and Miscellaneous Issues

Board Meetings

Board meetings are normally held on the first Tuesday of every month from 11:30 a.m. to 12:30 p.m. at the MSPE Building on East McCarty.

Past Events and Meetings

Thursday, November 4, 2010 Hayride

The MSPE Chapter hosted a hay ride at Binder Park on Thursday, November 4, 2010. A few folks had an adventure trying to find where the hayride started, but after that everything went well. There has a cozy fire to sit by and roast hotdogs and marshmallows. It was a nice relaxing time sitting in the cool fall air and enjoy good company and conversation as the kids ran in and out of the firelight. Those in attendance at the event are provided below.

David and Julie Bange with their daughter
Elizabeth Duvall and her husband with one of their children,
Bob Gilbert and his wife with three children,
Ashley Reinkimeyer
Jason and Linette Sommerer with one of their children,
Eric Stevens with four children.

Tuesday, October 26, 2010 Chapter Meeting

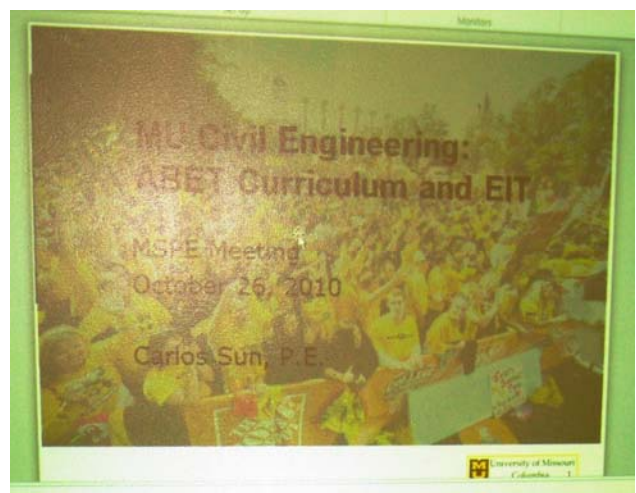
The MSPE Jefferson City Chapter Lunch for October was held on Tuesday, October 26, 2010 at the American Legion at 1423 Tanner Bridge Rd. The speaker for the meeting was Dr. Carlos

Sun, P.E. Associate Professor and Director of Graduate Studies, Department of Civil and Environmental Engineering at the University of Missouri Columbia. He gave a presentation on ABET accreditation requirements for the civil engineering at the University of Missouri and on the topic of accreditation and the FE exam. Those in attendance at the meeting and pictures of the event are provided below.

David Bange, P.E.
Gary Davis, E.I.
Elizabeth Duvall, P.E.
Bill Fanska P.E.
Mike Fritz, P.E.
Jennifer Harper, P.E.

Cliff Jarvis, P.E.
Todd Kempker
Dan Maxwell, P.E.
Ashley Reinkemeyer, E.I.
Tom Scheppers, P.E.
Britt Smith, P.E.

Jason Sommerer, P.E.
Bill Stone, P.E.
Ken Stumpf, P.E.
Carlos Sun, P.E.
Bill Washburn, P.E.



Top Row: Dr. Carlos Sun, P.E. Associate Professor and Director of Graduate Studies at UMC with his presentation on ABET accreditation requirements for the civil engineering.
Bottom Row: The MSPE members and guests enjoying lunch prior to the presentation.

Membership Update

Please remember that membership is vital for our society. If you know someone who is not a member of MSPE, please give them an application and invite them to attend a meeting. The application is also available online at <http://www.mspe.org/membership.html>. First time attendees, member or not, will receive a free lunch. Also be sure to tell them about the Professional Development Hours (PDH) opportunities and the other benefits of being a part of MSPE.

Request for Educational Foundation Donations

The MSPE Educational Foundation needs your donations. The MSPE Educational Foundation provides a tax deductible way for members to benefit the educational outreach activities of our society. It is important to have the resources to reach out to the younger people. We hear frequently that there will be a shortage of engineers in the future and many kids never know that their interest in building, and fixing, and calculating, and discovering can be developed into a wonderful career in engineering. A tax-deductible donation is also a way to help MSPE when you do not have the time to be more actively involved. Please send your donations to:

Jefferson City Chapter MSPE
Attn: Education Foundation
P.O. Box 662
Jefferson City, MO 65102-0662

7th
Annual

Fall PDH Days



Tuesday and Wednesday, December 7 and 8, 2010
Capitol Plaza Hotel, 415 West McCarty St., Jefferson City, Missouri



- 15 PDH Credits in two days (satisfies one-year's PDH requirements)
- Affordable — less than \$30 per PDH
- Lunch & coffee breaks included in registration
- Lodging \$79 plus tax
- Call 1-373-633-1234 or 1-800-338-8088 by November 22, 2010 for hotel reservations

Program Focus:

Disaster Recovery - Tuesday, December 7 (9 am -6 pm):
Minnesota I-35W Bridge Collapse, Missouri I-470 Slope Failure, Crisis Communication, SAVE Coalition and more.
Design Build - Wednesday, December 8 (8 am- 4 pm):
Design Build "Nuts and Bolts," Contractual Differences, Ethics, Leadership Skills, Insurance and Legislation.



Missouri Society of
Professional Engineers

FALL PDH DAYS REGISTRATION FORM

To register complete this form and mail, fax or email to:
MSPE, 200 E. McCarty Street, Suite 200, Jefferson City, MO 65101 FAX: 573-636-5475 EMAIL: cheriebishop@mspe.org

Name: _____ Nickname: _____

Employer: _____

Preferred Mailing Address: _____

City: _____ State: _____ Zip: _____

Daytime Phone: _____ Email address: _____

Check Enclosed (Make checks payable to MSPE)

Bill My Credit Card: Visa Mastercard Discover Credit Card # _____

Expiration Date: Month _____ Year _____

Cardholders Name: _____

Signature: _____

Please check session attendance below:

MSPE Member Single-Day: \$225.00 Circle PDH Session: Tuesday or Wednesday

MSPE Member Both Days: \$400.00

Non-Member Single-Day: \$450.00 Circle PDH Session: Tuesday or Wednesday

Non-Member Both Days: \$800.00

Attend and Join MSPE (State & Chapter) Single-Day: \$325.00 Circle PDH Session: Tuesday or Wednesday

Attend and Join MSPE (State & Chapter) Both Days: \$500

Add National Society membership to "Attend and Join" packages: \$100

**Registration Deadline: 5 p.m.,
Wednesday, December 1, 2010**



**It's time to start making plans for Holiday Parties.
One not to forget is the MSPE
Christmas Dinner and Gift Exchange.**

**Please join us
Tuesday, December 7th, 6:00 pm to 9:00 pm at
Madison's Café,
216 Madison Street**

**6:00 pm to 6:30 pm Happy Hour (Cash Bar)
6:30 pm to 7:30 pm Butler-Style Dinner**

**You may choose one of the following entrees:
Top Sirloin \$15.95, Chicken Parmigiano 17.95, Bone-In Pork Chop \$10.50, or Lasagna \$14.95
Included are a salad & Italian bread, the beef and chicken dishes also include a side of cavatelli
7:30 pm to 9:00 pm Voluntary Gift Exchange (\$10-\$15) and Socializing**

**Please RSVP By Thursday, December 2, 2010 to David Bange
DBange@jeffcitymo.org or 573-634-6433**

