



# **JEFFERSON CITY CHAPTER** **NOVEMBER NEWSLETTER**



***MERRY CHRISTMAS AND HAPPY NEW YEAR***

## **Upcoming Events and Meetings**

### **Tuesday, January 26, 2010 Chapter Meeting**

The MSPE Jefferson City Chapter Lunch for January will be held on Tuesday, January 26, 2010. The location and speaker for the meeting is still being arranged and more information will be provided as it becomes available.

Note: There will be no Jefferson City Chapter meeting in December because of the busy time of the holidays.

### **6<sup>th</sup> Annual Fall Professional Development Days**

MSPE's 6<sup>th</sup> Annual Fall Professional Development Days will be held on Tuesday and Wednesday, December 8 and 9, 2009 at the Capitol Plaza Hotel at 415 West McCarty Street in Jefferson City. This 2-day event provides up to 15 hours of professional development hours (PDH) for your P.E. licensure renewal at less than \$35 per PDH unit for MSPE members.

Scheduled program sessions include topics on Morals, Ethics and Justice as applied to the engineering profession, Immediate Personal Supervision, Leadership Development, New Tools In Project Delivery, Innovative Engineering Solutions from MoDOT's Safe and Sound Program, Smart Traffic Signals, Taum Sauk Reservoir Rebuild, Understanding the Economy and more. Please see the attached flyer/registration form at the end of this newsletter for more information.

The deadline for registration is by 5 p.m. on Wednesday, December 2, 2009. A copy of the registration form is attached to the end of this newsletter for your convenience and has additional useful information. For any questions, please contact the MSPE office at 573-636-4861.

### **December 17, 2009, Chapter Christmas Party**

The Christmas party will be December 17, 2009 at O'Donoghue's located at 900 E High St. in Jefferson City from 5:30 p.m. to 9:00 p.m.. Further details to be provided later as they become available.

## **MARK YOUR CALENDARS NOW for the...**

### **2010 MSPE Annual Convention - *Charting a New Course***

When: Sunday, June 13 through Wednesday, June 16, 2010

Where: The Resort and Yacht Club  
3287 Bagnell Dam Blvd.  
Lake Ozark, MO 65049

[www.ResortandYachtClub.com](http://www.ResortandYachtClub.com)

Room Rates: \$139 for either a One-Room Suite or a Studio.  
Limited Number of One-Room Suites at this Rate!  
Rates are first come, first serve.  
All rooms are lake view!

This year's convention will feature luxury accommodations (at a bargain price!) at the prime tourist location of Lake of the Ozarks. The committee is already working to develop a convention schedule with a wide variety of interesting PDH sessions, fun and laid back social events, and an outstanding Annual Banquet. Additional details to come at a later date.

If you have any questions please contact, Ashley Reinkemeyer by phone at (573) 751-3728 or by email at [Ashley.Reinkemeyer@modot.mo.gov](mailto:Ashley.Reinkemeyer@modot.mo.gov). Comments are also welcome, so please send Ashley any comments you may also have on the convention. We hope you can come out and enjoy a great convention at a great location with great people.

### **Board Meetings**

Board meetings are normally held on the first Tuesday of every month from 11:30 a.m. to 12:30 p.m. at the MSPE Building on East McCarty.

## **Past Events and Meetings**

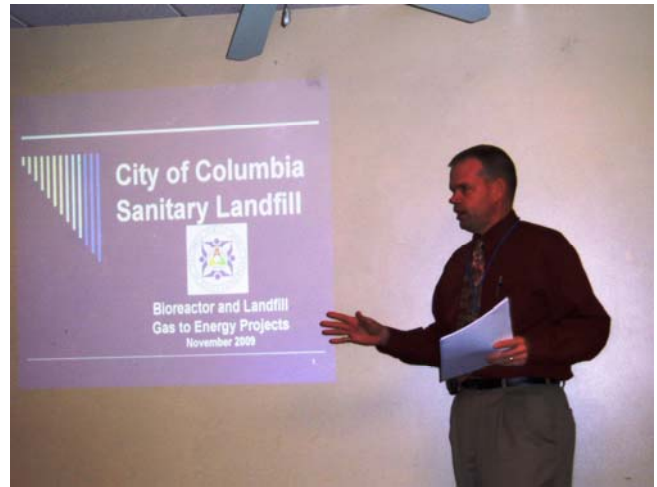
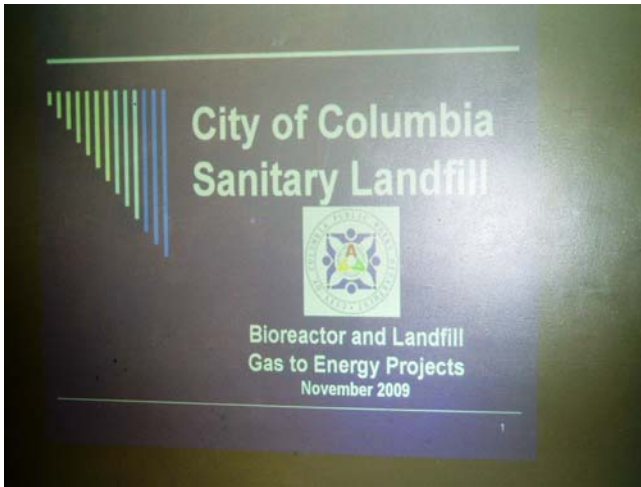
### **Tuesday, November 17, 2009 Chapter Meeting**

The MSPE Jefferson City Chapter Lunch for November was held on Tuesday, November 17, 2009 at the American Legion at 1423 Tanner Bridge Rd. The speaker for the meeting was Mr. Steve Hunt with the Columbia Public Works who gave a presentation on Missouri's first bio-landfill to be located at the Columbia landfill. Those in attendance at the October Chapter Meeting, along with pictures of the event are provided below.

Bob Anderson, P.E.  
Bob Atkinson, P.E.  
David Bange, P.E.  
Theron Broadfoot, P.E.  
Jim Burtin, P.E.  
Garry Chegwiddden, P.E.  
Randy Clarkson, P.E.  
John T. Conway, P.E.  
Chris Criswell, P.E.  
Elizabeth Duvall, P.E.

Bill Fanska P.E.  
Don Fontana, P.E.  
Mike Fritz, P.E.  
Cliff Jarvis, P.E.  
Clif Jett, P.E.  
Edmund Moody, P.E.  
Greg Nehring, E.I.  
Jon Nelson, P.E.  
Don Neumann, P.E.

Ashley Reinkemeyer, E.I.  
Art Rice, P.E.  
Eric Seaman, P.E.  
Britt Smith, P.E.  
Charles Stieffermann, P.E.  
Ken Stumpf, P.E.  
Sabir Vali, P.E.  
John Wenzlick, P.E.  
Dave Zimmerman, P.E.



Top Row: Mr. Steve Hunt with the Columbia Public Works discussing issues Missouri's first bio-landfill to be located at the Columbia landfill.  
 Bottom Row: MSPE members and guests enjoying lunch prior to the presentation.

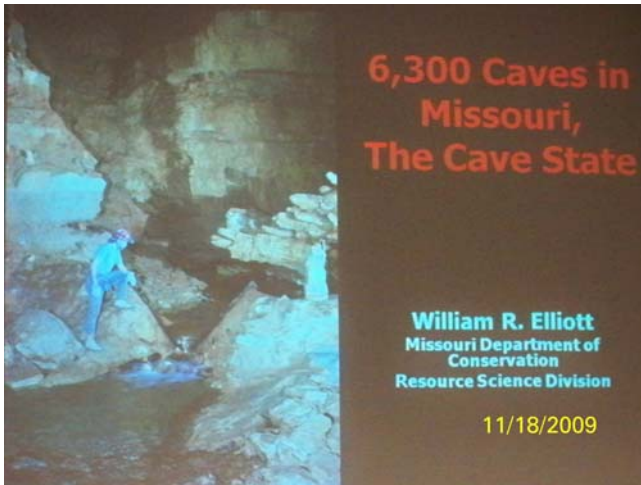
**Wednesday, November 18, 2009 Annual Spouse's Meeting**

The Annual Spouse's Meeting was held on Wednesday, November 18, 2009 at NH Scheppers's Clydesdale Room in Jefferson City. The speaker for the meeting was Mr. William Elliot, PhD with the Missouri Department of Conservation. Mr. Elliot gave a presentation on Missouri caves and bats. Those in attendance at the October Chapter Meeting, along with pictures of the event are provided below.

Theron Broadfoot, P.E.  
 Travis Bruemmer  
 Zach Buechter  
 Garry Chegwiddden, P.E.  
 Mary Chegwiddden  
 Bob Sfredo, P.E.  
 Norma Sfredo  
 Britt Smith, P.E.

Gary Davis, E.I.  
 Krista Davis  
 William "Bill" Elliot (speaker)  
 Barb Hiatte  
 Don Hiatte, P.E.  
 Candy Smith  
 Jason Sommerer, P.E.  
 Linette Sommerer

Barbara Neumann  
 Don Neumann, P.E.  
 Ashley Reinkemeyer, E.I.  
 Art Rice, P.E.  
 Nancy Rice  
 Charles Stieffermann, P.E.  
 Fran Stumpf  
 Ken Stumpf, P.E.



Top Row: Mr. William Elliot, PhD with the Missouri Department of Conservation gives a presentation on Missouri caves and bats while the attendees present listen intently.  
Bottom Row: MSPE members and guests social and enjoy dinner prior to the presentation.

## **Membership Update**

Please remember that membership is vital for our society. If you know someone who is not a member of MSPE, please give them an application and invite them to attend a meeting. The application is also available online at <http://www.mspe.org/membership.html>. First time attendees, member or not, will receive a free lunch. Also be sure to tell them about the Professional Development Hours (PDH) opportunities and the other benefits of being a part of MSPE.

## **Request for Educational Foundation Donations**

The MSPE Educational Foundation needs your donations. The MSPE Educational Foundation provides a tax deductible way for members to benefit the educational outreach activities of our society. It is important to have the resources to reach out to the younger people. We hear frequently that there will be a shortage of engineers in the future and many kids never know that their interest in building, and fixing, and calculating, and discovering can be developed into a wonderful career in engineering.

A tax-deductible donation is also a way to help MSPE when you do not have the time to be more actively involved. Please send your donations to:

Jefferson City Chapter MSPE  
Attn: Education Foundation  
P.O. Box 662  
Jefferson City, MO 65102-0662

6th  
Annual

# Fall PDH Days



**Tuesday and Wednesday, December 8 and 9, 2009**  
**Capitol Plaza Hotel, 415 West McCarty St., Jefferson City, Missouri**



- 15 PDH Credits in 2 days
- Less than \$35 per PDH unit for members
- Lunch and breaks included in registration fee
- Lodging available at \$79 plus tax until November 23, 2009
- For room reservations call 573-635-1234 or 1-800-338-8088

## PDH Topics

**Tuesday, December 8, 2009** ♦ **Morals, Ethics and Justice** as applied to the engineering profession by Vaughn Prost, P.E., ♦ **Immediate Personal Supervision** by Kevin C. Skibiski, P.E. ♦ **Leadership Development** by Dr. Dianne Slattery, P.E. ♦ **New Tools In Project Delivery** by Chris Cobb and Bob Gilbert, P.E.

**Wednesday December 9, 2009** ♦ **Innovative Engineering Solutions from MoDOT's Safe and Sound Program** ♦ **Smart Traffic Signals** by Matt Myers, P.E. ♦ **Taum Sauk Reservoir Rebuild** by Warren Witt ♦ **Plus, additional topics and speakers** including **Understanding the Economy** by William Emmons.



## FALL PDH DAYS REGISTRATION FORM

To register complete this form and mail to:

MSPE, 200 E. McCarty Street, Suite 200, Jefferson City, MO 65101 FAX: 573-636-5475

Name: \_\_\_\_\_ Nickname: \_\_\_\_\_

Employer: \_\_\_\_\_

Preferred Mailing Address: \_\_\_\_\_

City: \_\_\_\_\_ State: \_\_\_\_\_ Zip: \_\_\_\_\_

Daytime Phone: \_\_\_\_\_ Email address: \_\_\_\_\_

Check Enclosed (Make checks payable to MSPE)

Bill My Credit Card: Visa Mastercard Discover Credit Card # \_\_\_\_\_

Expiration Date: Month \_\_\_\_\_ Year \_\_\_\_\_

Cardholders Name: \_\_\_\_\_

Signature: \_\_\_\_\_

Please check session attendance below:

MSPE Member Single-Day: \$225.00

Circle PDH Session: Tuesday or Wednesday

MSPE Member Both Days: \$400.00

Non-Member Single-Day: \$450.00

Circle PDH Session: Tuesday or Wednesday

Non-Member Both Days: \$800.00

*Non-members, reduce your cost to attend, Call MSPE at 573-636-4861 for our "Attend and Join" specials!*

**Deadline: 5 p.m.,  
Wednesday, December 2, 2009**