



JEFFERSON CITY CHAPTER JULY NEWSLETTER



Upcoming Events and Meetings

Tuesday, August 25, 2009 Chapter Meeting

The MSPE Jefferson City Chapter Lunch for August will be held on Tuesday, August 25, 2009 from 12:00 p.m. to 1:00 p.m. at the American Legion at 1423 Tanner Bridge Rd. The meeting will be in the “Annex” room, through the bar area off the main dining room. There will be a lunch buffet with a choice of entrees, vegetables, salad, bread, dessert, and your choice of tea, lemonade, or coffee to drink. The cost will be \$8 per member and please mention that you are with the Engineers Club when you pick up your food. If you are planning on attending, please RSVP to Greg Nehring by 9 a.m. on Monday August 24, 2009. Greg can be reached by email at GNehring@ESS-Inc.com or by phone at (660) 826-8618.

The speaker for the meeting will be [Mark Mehmert with the Jefferson City Area Chamber of Commerce](#). He will present on the Chamber’s current role in the community and ways engineer’s in can get involved.

Friday, August 28, 2009 - 2009 Leaders Workshop

MSPE President Ben Ross, P.E. is hosting the MSPE Leaders Workshop on Friday, August 28, 2009 from 10 a.m. to 3 p.m. in the MSPE Office at 200 E. McCarty St., Suite 200 in Jefferson City, Missouri. The focus of this year’s workshop will be on communicating MSPE’s value by engaging members in state and chapter activities. The workshop is especially for Chapter Presidents/Officers and State & Chapter Practice Division Chairs, but all members are invited to participate. Agenda topics include: Two-Tier Membership - MSPE & NSPE, Shared Leadership, MSPE Communication Tools, IRS Changes, and Chapters Practice Divisions - Working Together. If you are interested in attending, please e-mail your attendance request to Cherie Bishop at cheriebishop@mspe.org by Friday, August 21, 2009.

Board Meetings

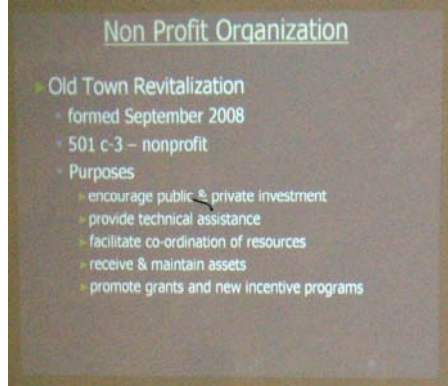
Board meetings are normally held on the first Tuesday of every month from 11:30 a.m. to 12:30 p.m. at the MSPE Building on East McCarty.

Past Events and Meetings

Tuesday, July 28, 2009 Chapter Meeting

The MSPE Jefferson City Chapter Lunch for July was held on Tuesday, July 28, 2009 at the American Legion at 1423 Tanner Bridge Rd. The speaker for the meeting was Mr. Phil Freeman. Mr. Freeman discussed the on-going efforts to renew the economic and visual aspects of the Old Town area in Jefferson City and provided examples of Old Town Revitalization

projects. Incentive programs for private property improvements in the community’s historic areas including the Old Town Down Payment Incentive Program which offers up to \$5,000 down payment assistance for qualified home buyers who purchase residential property located in Old Town area were also covered. Pictures of the presentation and the event are provided below.



Top Row: Title slide from the presentation, the Old Town Revitalization project’s goals in the efforts to renew the economic and visual aspects of the Old Town area and aerial photo showing the Old Town area.
 Bottom Left: Phil Freeman prepares to discuss the Old Town Revitalization projects.
 Bottom Right: MSPE members and guests enjoying lunch prior to the presentation.

Tuesday, June 30, 2009 Chapter Meeting

The MSPE Jefferson City Chapter Lunch for June was held on Tuesday, June 30, 2009 at the American Legion at 1423 Tanner Bridge Rd. The speaker for the meeting was Britt Smith, P.E., Street and Parking Division Director for the City of Jefferson. He provided a summary of legislative activity during the last session, as well as an “end-of-the-year” update for MSPE. Britt also installed the new Jefferson City Chapter officers. Pictures of the new officers and of the event are provided below.



Above: Incoming Jefferson City Chapter Officers: (from left to right): Theron Broadfoot, P.E. (Treasurer), David Bange, P.E. (Secretary), Greg Nehring, E.I. (Vice President), Ashley Reinkemeyer, E.I. (President), Ashley Coffman, P.E. (Past President), and Britt Smith, P.E.



Middle Picture : Incoming President Ashley Reinkemeyer, E.I. (right) presents Past President Ashley Coffman, P.E. (left) with a commemorative plaque from the Jefferson City Chapter.
Bottom Left and Right: MSPE members attending the JC Chapter Meeting.

Membership Update

Also please remember that membership is vital for our society. If you know someone who is not a member of MSPE, please give them an application and invite them to attend a meeting. The application is also available online at <http://www.mspe.org/membership.html>. First time attendees, member or not, will receive a free lunch. Also be sure to tell them about the Professional Development Hours (PDH) opportunities and the other benefits of being a part of MSPE.

Request for Educational Foundation Donations

The MSPE Educational Foundation needs your donations. The MSPE Educational Foundation provides a tax deductible way for members to benefit the educational outreach activities of our society. It is important to have the resources to reach out to the younger people. We hear frequently that there will be a shortage of engineers in the future and many kids never know that their interest in building, and fixing, and calculating, and discovering can be developed into a wonderful career in engineering. A tax-deductible donation is also a way to help MSPE when you do not have the time to be more actively involved. Please send your donations to:

Jefferson City Chapter MSPE
Attn: Education Foundation
P.O. Box 662
Jefferson City, MO 65102-0662